

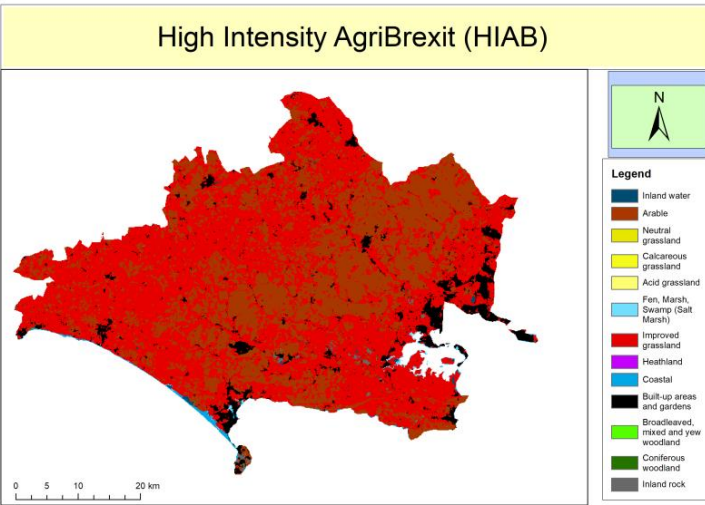
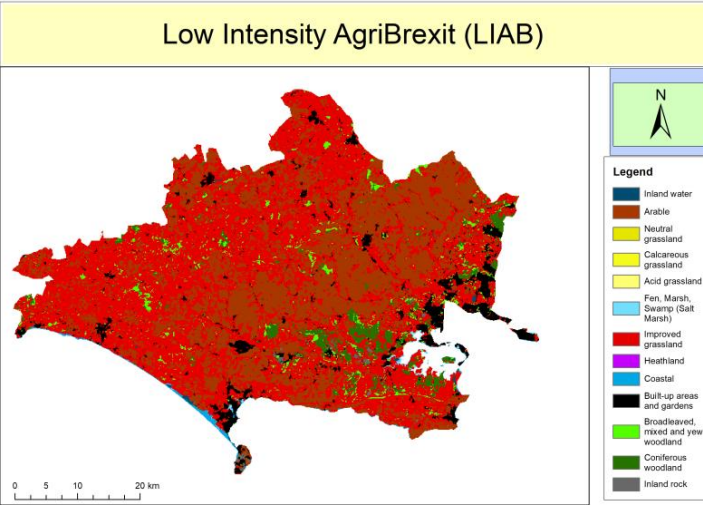
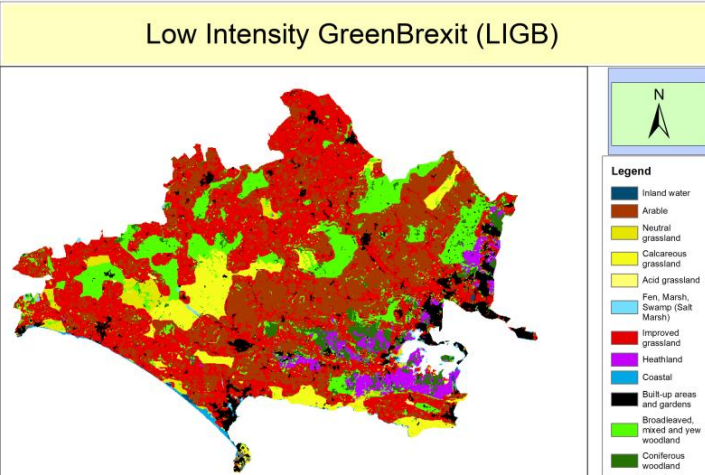
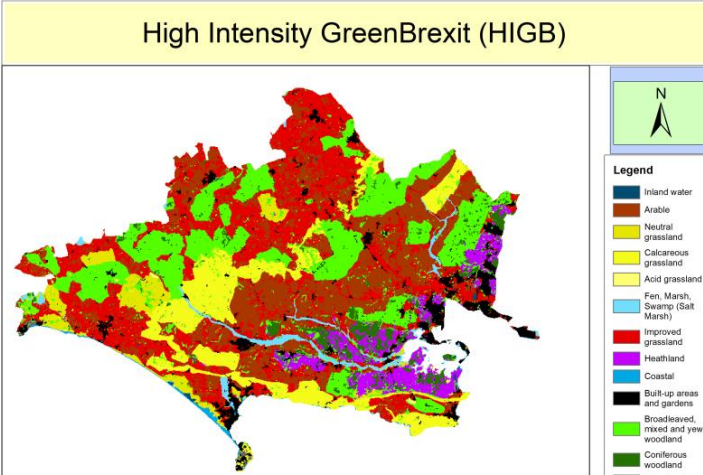
Session F2: Linking Natural Capital, Tipping Points and Ecosystem Services



Linking Natural Capital, Tipping Points and Ecosystem Services

- Does the value of rural land use for provision of ecosystem services outweigh its value for food production?
- Given the post-war changes that have occurred in agriculture, involving expansion, intensification and associated biodiversity loss, have we already passed a tipping point in natural capital?
- Might social and policy change be as important as climate change in driving abrupt and irreversible changes in the provision of ecosystem services from UK peatlands?
- Do we focus too much on the quantity of our natural capital rather than the quality?
- Is the lack of tipping points a positive sign for the future ? (if there are no tipping points yet does this mean we've still got time to reverse negative patterns and improve natural capital?)

Linking Natural Capital, Tipping Points and Ecosystem Services



TPAL Project
**Dorset: future
 Brexit
 scenarios**